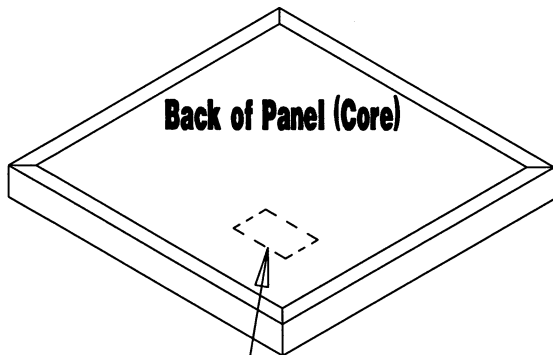
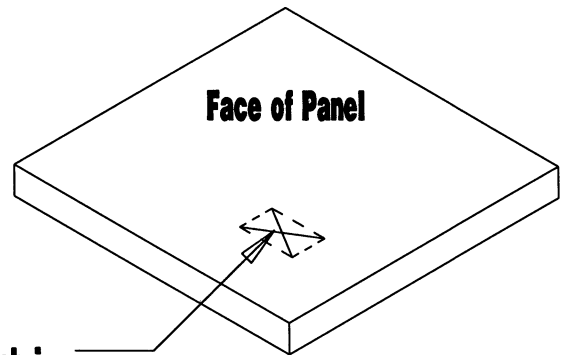


1) Locate the position of the hole on the back of panel. Use an outlet box as a template by pressing it into the fiberglass



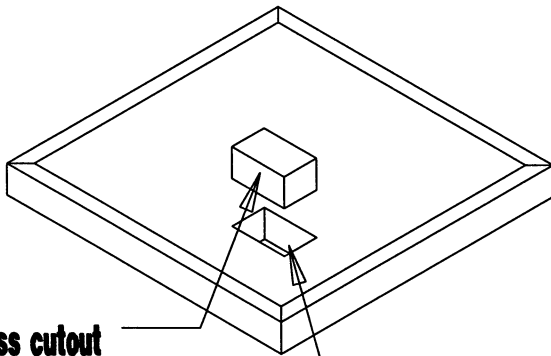
**Location of outlet hole
to be cut**

**3) Cut the fabric diagonally across the hole
(in the shape of X)**



Cut in fabric

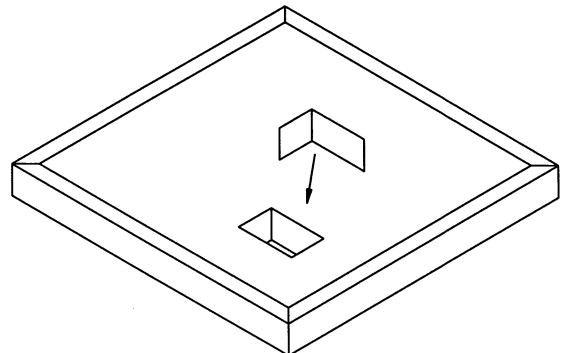
**2) Cut the fiberglass out being careful
not to cut through the fabric facing**



Fiberglass cutout

Cutout in panel

**4) Adhere strip of fabric around the exposed edge of
the hole before wrapping the excess fabric from the
face around the edge to the back of panel**



**(Note: Cutting fabric diagonally and wrapping it around
the edge will leave a void in the corner - thus the reason
for the extra strip of fabric)**